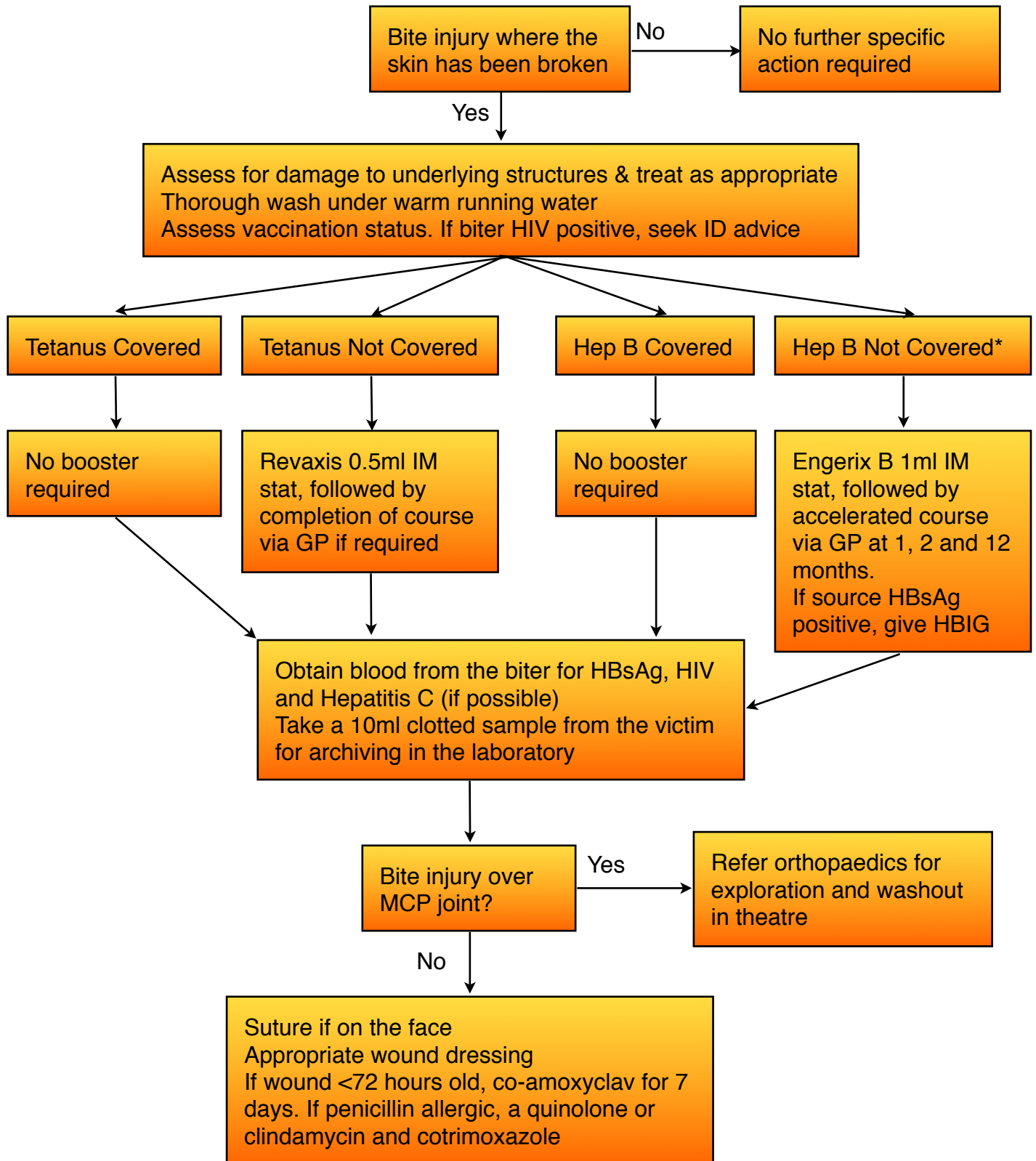


## A&E Clinical Guidelines

### Human Bite Injuries

"Guidance for the Management of Human Bite Injuries, Guidance for healthcare professionals on dealing with injuries where teeth break the skin" HPA North West October 2010



\*see PTO for further details concerning hepatitis vaccination

## A&E Clinical Guidelines

HBV status of person exposed	Significant exposure		
	HBsAg positive source	Unknown source	HBsAg negative source
≤ 1 dose HB vaccine pre-exposure	*Accelerated/ **hyper-accelerated course of HB vaccine HBIG x 1	*Accelerated/**hyper-accelerated course HB vaccine	Initiate course of HB vaccine
≥ 2 doses HB vaccine pre-exposure (anti-HBs not known)	One dose of HB vaccine followed by second dose one month later	One dose of HB vaccine	Finish course of HB vaccine
Known responder to HB vaccine (anti-HBs > 10 miU/ml)	Consider booster dose of HB vaccine	Consider booster dose of HB vaccine	Consider booster dose of HB vaccine
Known non-responder to HB vaccine (anti-HBs <10 miU/ml 2-4 months post-immunisation)	HBIG x 1 Consider booster dose of HB vaccine	HBIG x 1 Consider booster dose of HB vaccine	No HBIG Consider booster dose of HB vaccine

\*An accelerated course of vaccine consists of doses spaced at 0, 1 and 2 months. A booster dose may be given at 12 months to those at continuing risk of exposure to HBV \*\*A hyper-accelerated course of vaccine may be offered by some Occupational Health Depts. This consists of doses at 0,7,21 days with booster dose at 6 or 12 months